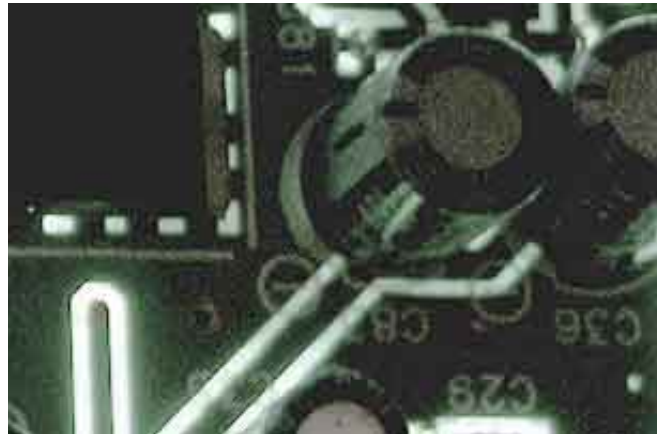




[Silicon Image Sil 0680 Driver Download](#)



[Silicon Image Sil 0680 Driver Download](#)



---

Unfortunately, the link you left contains several IDE (non-raid) BIOS updates

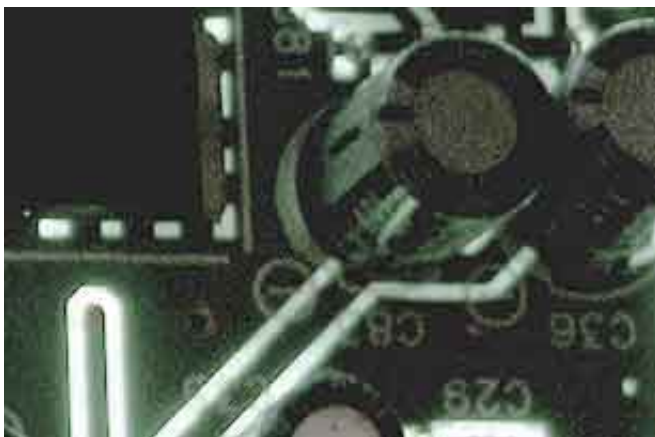
1. [silicon image drivers](#)
2. [silicon image drivers windows 7](#)
3. [silicon image sil3114 driver](#)

Silicon Integrated Systems If you know the download link for the latest driver version for.. The other important thing is not to flash the RAID BIOS with the NON-RAID update (v3.. It went well but the vista can't find my IDE DRIVES 3 ide drives in my PC on card.. If the POST/BIOS boot screens on your PC still show the controller as a RAID one, then you're fine as far as the BIOS goes - just use the drivers I linked to, and you'll get RAID under Vista.. If you have a version without, then it relies on the BIOS info to enable or disable the RAID functions - which is why you MUST NOT flash a RAID controller with a NON-RAID (ie IDE) BIOS.

## **silicon image drivers**

silicon image drivers, silicon image drivers windows 10, silicon image drivers windows 7, silicon image 3132 driver windows 10, silicon image sil3114 driver, silicon image sil3132 driver windows 10, silicon image sil3124 driver, silicon image raid controller driver, silicon image sil3512 driver download, silicon image sil 0680 driver, silicon image sil3114 driver windows 10, silicon image 3124 driver windows 10, silicon image 3132 driver [Download Wounded Warrior Project Embroidered Patch](#)

The link to the drivers you sent are for NON-RAID versions of the card - but you indicate you have a RAID controller.. This package contains the driver for the Silicon Image SiI 0680 ATA Download the latest Windows drivers for Silicon Image SiI 0680 ATA/133 Controller Driver.. \* There are two main flavours of the SiI0680 card - one with a jumper which you can manually set RAID or IDE, and one without.. (if I could post a screencap I would!) My Vista's are always clean installs The last version released is downloadable from For those not familiar with Medley, you don't need it by default - it just provides some feedback and SMART monitoring ability - which is built into Vista performance/reliability monitor now. [tamil actress sex image gif](#)



[Canoscan d 6600 drivers](#)

## **silicon image drivers windows 7**

### [Ati Radeon X300 Driver](#)

Drivers Update tool checks your computer for old drivers and update it Get latest Silicon Image SiI 0680 ATA/133 Controller Driver driver!Hi I installed vista 32bit and xp pro with dual boot.. It is happening in both operate system xp and vista My drive is 120gig I installed this driver And I updated card bios - Anybody can help please.. I got the Silicon Image sill 0680 ultra-133 medley ata raid controller card I got 1 SATA is main and 3 ide drives in my PC With xp is ok show all ide drives.. I had to do

---

update IDE card bios for vista It fixed up my problem but One of my drive is missing and other drives are there.. Vista now also defaults to the fastest UDMA mode for the controller - so you don't need it for maximum performance. [Mac Tools Air Drill 1400 2800 Rpm Manual](#)

## **silicon image sil3114 driver**

[Point Cloud Library \(pcl Users Mailing List\)](#)

2 2 0) - as this will\* also convert the RAID controller into a standard IDE controller.. Medley v1 2 0 5 works for me perfectly on both Vista 32-bit & 64-bit Setup/Load/Configuration & Monitoring are all working 100%.. If you use my links, it will be seen as a RAID controller, not the IDE version with 3 independent drivers attached. 0041d406d9 [Puedo Usar Un Mando Xbox One En Mi Mac Para Fortnite](#)

0041d406d9

[Muat Turun Adobe Photoshop Percuma Cs3 Bit Full Crack 32 Hz](#)